



SUBJECT: Improvements to the electromechanical wheel clamping system

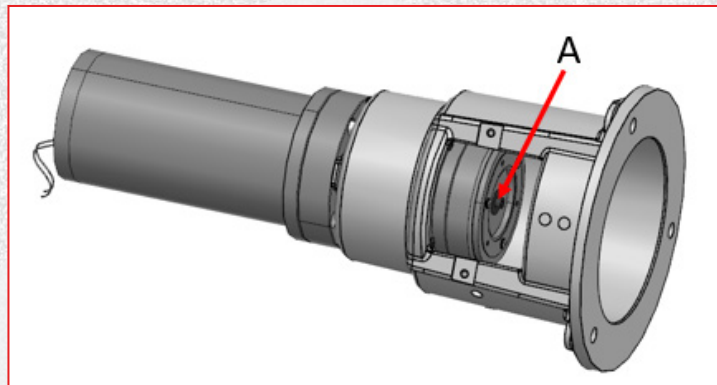
Dear Sirs,

we aim at constantly improving product quality and are pleased to inform you that as of September 2022 following two changes will be implemented into production phase:

1. The hexagon head clutch fixing screw VTE 5739 8.8 BR M 3X 12 code 2-00690 (A in the figure) has been replaced by the new cylindrical head hexagon socket **screw** VTCEI 4762 12.9 BR M 3X 12 **code 2-00922**.

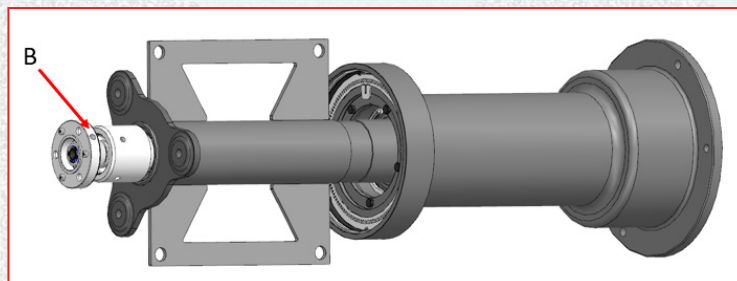
NB: tighten to 1Nm and use LOCTITE 243 threadlocker.

The new screw ensures greater resistance to fatigue.



2. The optical rotary encoder "codewheel" (B in the figure) code 4-116965 has been replaced by the new **codewheel code 5-126995**.

The new component ensures better reflectance and greater resistance to moisture.



Thank you for your kind attention. We remain at your disposal for any further explanation.